

DESCRIPTION	D TO PL	TRIM	#
STAR DROP	+28'-0"		47
BLACK SCIRM	+28'-2"		46
BRICK DROP	+27'-0"	Off Stage Side Rig	45
BLACK LEGS	+26'-0"		44
STACKED FLATS	+25'-0"		43
BLACK TRAVELER	+24'-0"		42
BLACK TRAVELER	+23'-0"		41
LX 5	+22'-0"	24'	38
	+21'-0"		36
	+20'-0"		35
	+19'-0"		34
	+18'-0"		33
BLACK LEGS	+17'-0"		32
	+16'-0"		31
MOON BOX	+15'-0"		29
	+14'-0"		28
LX 4	+13'-0"	24'	26
	+12'-0"		25
	+11'-0"		24
	+10'-0"		23
BLACK TRAVELER	+9'-0"		22
	+8'-0"		21
BLACK LEGS	+7'-0"		20
LX SIDE RIG (from 22')	+6'-0"	On Stage Side Rig	17
LX 3	+5'-0"	24'	15
	+4'-0"		14
	+3'-0"		13
LX 2	+2'-0"	25'	10
	+1'-0"		9
	+0'-0"		7
LX 1	+0'-0"	24'	6
	+0'-0"		5
BLACK LEGS	+0'-0"		4
GRAND GRABER	+0'-0"		3
VALANCE	+0'-0"		2
PLASTER LINE	+0'-0"		1

INSTRUMENT KEY		
	1k Broad	4
	PAR 38	2
	Mini 10	8
	Colortran 20 Deg.	2
	ETC S4 PAR MFL	38
	PAR 64 MFL	20
	8" Fresnel @ 2kw	8
	12" Fresnel @ 5kw	4
	ETC 15-30deg S4 Zoom	8
	ETC Source 4 14deg	1
	ETC Source 4 19deg	1
	ETC Source 4 26deg	58
	ETC Source 4 36deg	28
	ETC Source 4 50deg	24
	ETC Source 4 Lustr II 19deg	12
	ETC Source 4 Lustr II 26deg	24
	ETC Source 4 Lustr II 36deg	4
	VL1100 TS	4
	Practical	10
	MR16 Birdie MFL	1
	Iris	1
	7.5" 4 Leaf Barn Door	15
	10" 4 Leaf Barn Door	21
	14" 4 Leaf Barn Door	4
	Template	

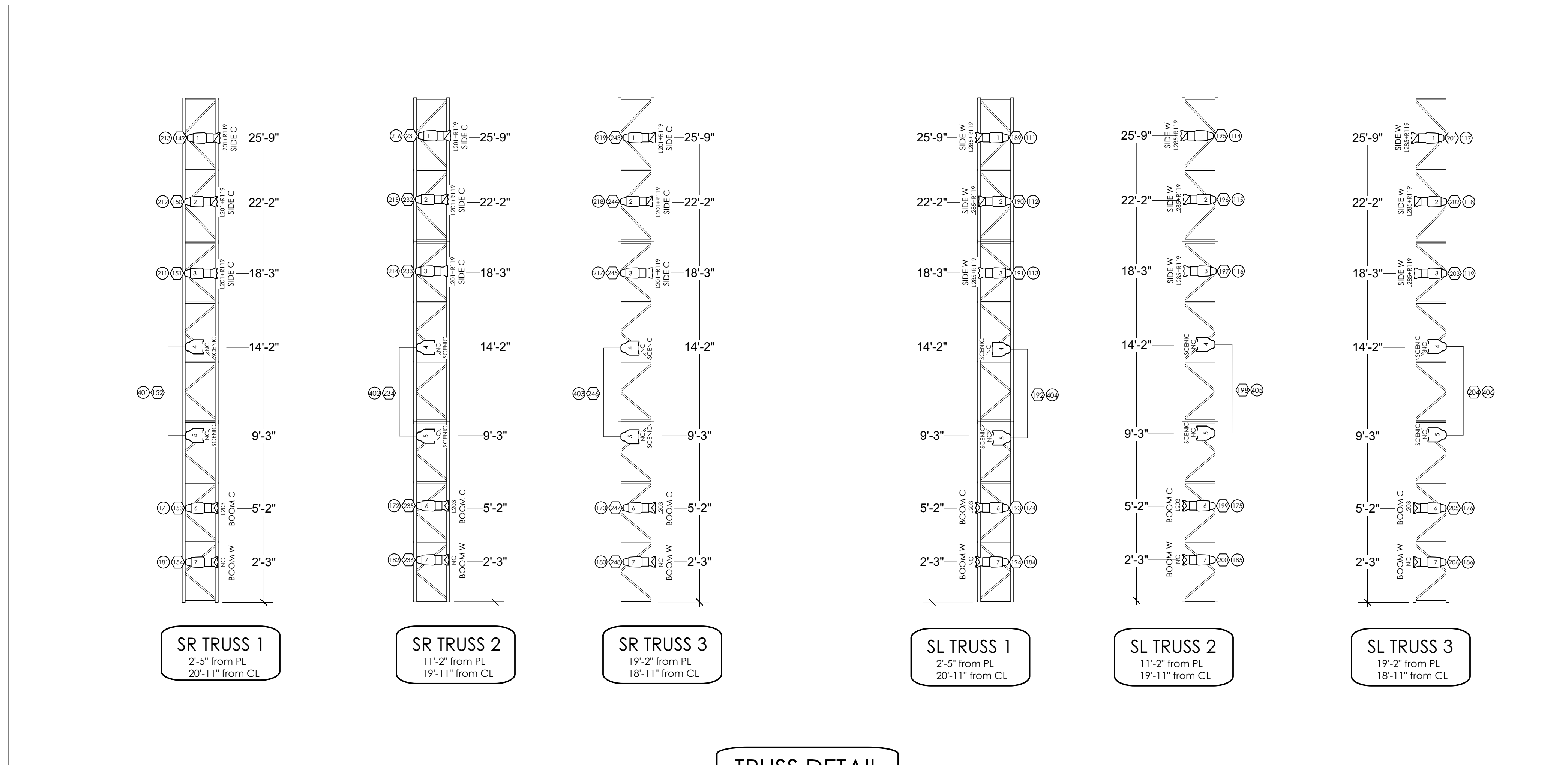
PURPOSE	TYP
FRONT	FRONT
TEMPLATE	TEMPLATE
COLOR	COLOR
	DENOTES ACCESSORY
	UNIT #
DIMMER	DIMMER
CHANNEL	CHANNEL

NOTES
 A. All S4 PAR, PAR64, and Fresnels over stage have barn doors
 B. Luster IIs over stage should have displays disabled
 C. Measurements for truss placement are from center of truss
 D. Heat shield and color extendors for 5k fresnels

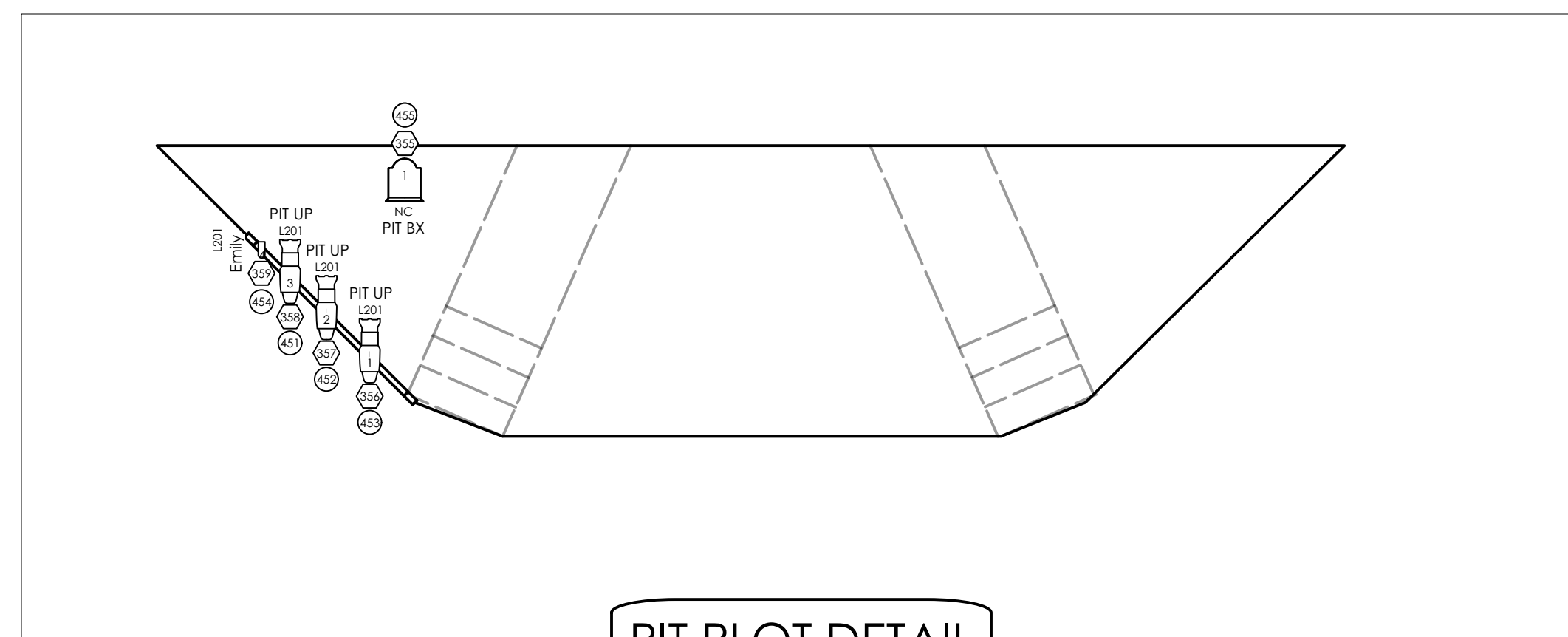
FIXTURE PROFILES
 Lustr 2 - Direct 10ch
 VL1100TS - Default

Our Town
 Patricia Corbett Theater
 Final Run Lighting Plot

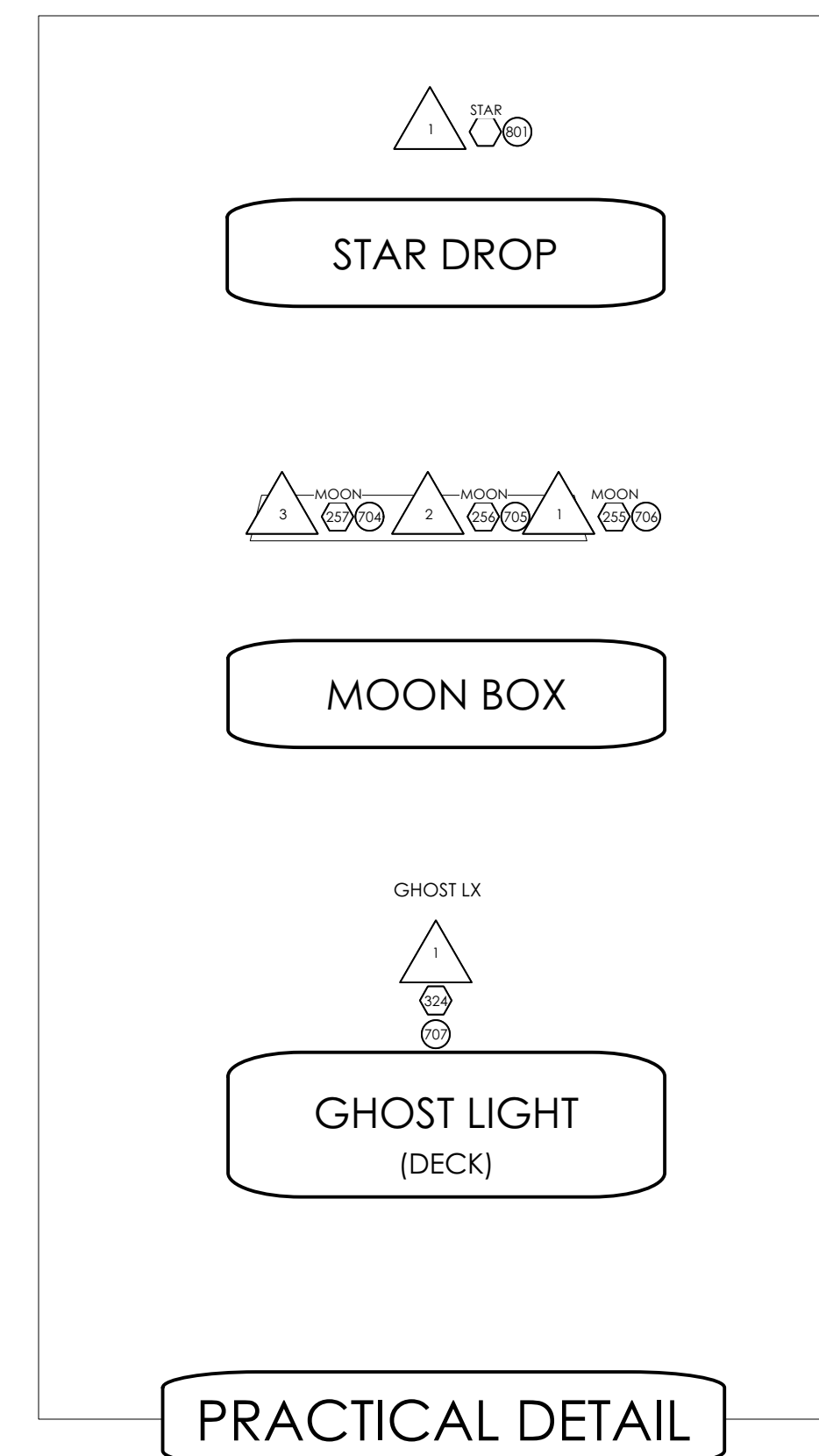
Updated 9/30/21 PBE
 Drafted by: Paige Baumann
 Lighting Designer: Paige Baumann
 Asst. Lighting Designer: Kristen Peck
 Master Electrician: Tai Kochav
 Asst. Master Electrician: Riley Rowan
 Director: Brant Russel



TRUSS DETAIL



PIT PLOT DETAIL



PRACTICAL DETAIL

INSTRUMENT KEY		
	1k Broad	4
	PAR 38	2
	Mini 10	8
	Colortran 20 Deg.	2
	ETC S4 PAR MFL	38
	PAR 64 MFL	20
	8" Fresnel @ 2kw	8
	12" Fresnel @ 5kw	4
	ETC 15-30deg S4 Zoom	8
	ETC Source 4 14deg	1
	ETC Source 4 19deg	1
	ETC Source 4 26deg	58
	ETC Source 4 36deg	28
	ETC Source 4 50deg	24
	ETC Source 4 Lustr II 19deg	12
	ETC Source 4 Lustr II 26deg	24
	ETC Source 4 Lustr II 36deg	4
	VL1100 TS	4
	Practical	10
	MR16 Birdie MFL	1
	Iris	1
	7.5" 4 Leaf Barn Door	15
	10" 4 Leaf Barn Door	21
	14" 4 Leaf Barn Door	4
	Template	
<p>TYP</p> <p>PURPOSE — FRONT</p> <p>TEMPLATE — AEX355</p> <p>COLOR — 120</p> <p> — DENOTES ACCESSORY</p> <p> — UNIT #</p> <p>DIMMER — (D)</p> <p>CHANNEL — (C)</p>		

NOTES

A. All 6 lighting trusses are TYP

B. Fixture 3 on each truss may need to be hung DS off pipe with side arm instead of in unistrut. TBD during load in

D. Pit Source 4s are to be hung on 8' goal post on DS/SR side of pit

E. Fixture 4 and 5 on each truss are twofered

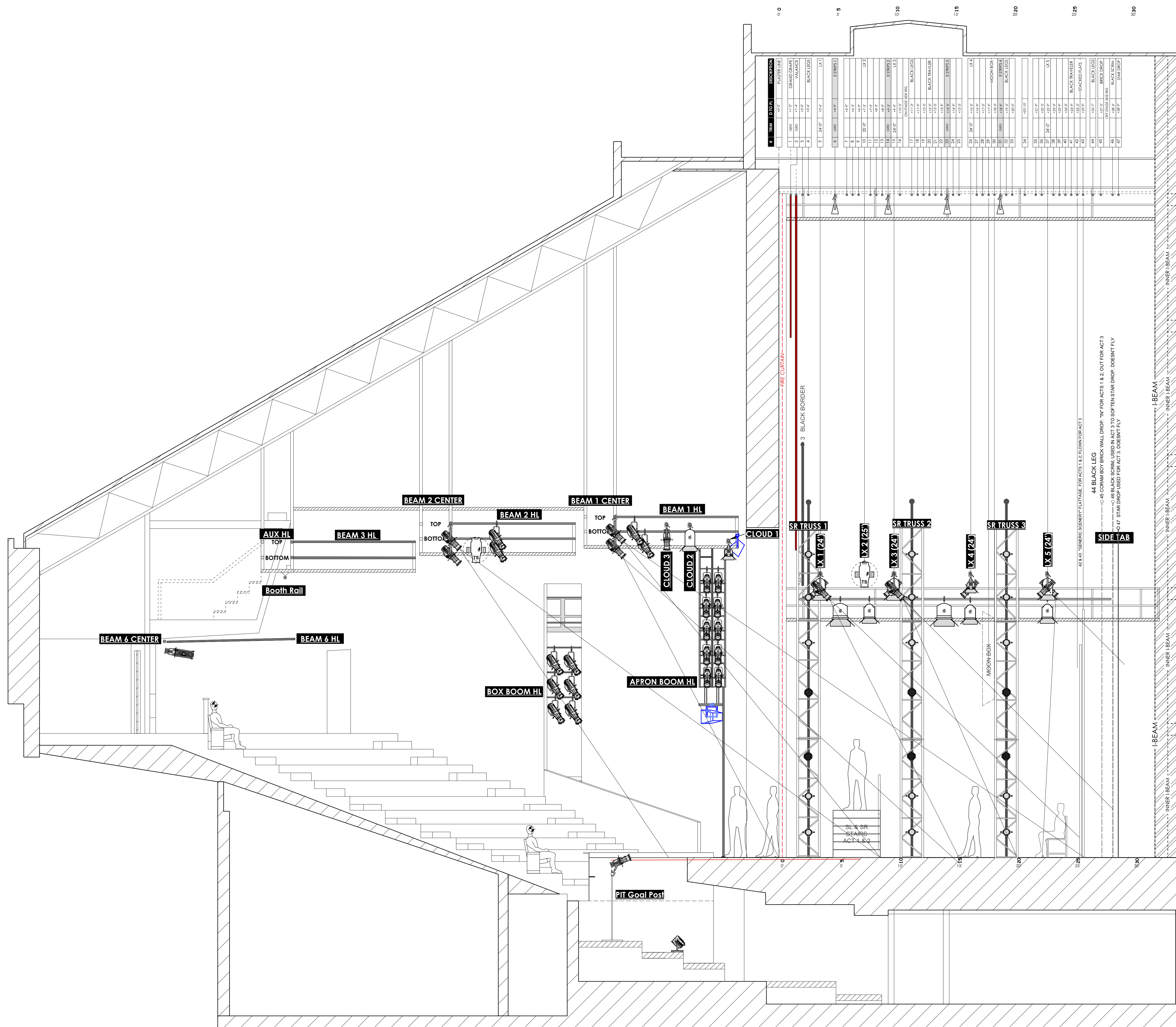
F. All measurements are from floor

G. 8" fresnel in pit is placed on floor plate

H. Star drop is channels 801- 832

Our Town
Patricia Corbett Theater
Final Run Lighting Plot
Auxiliary Positions

Updated 9/30/21 PBE
Drafted by: Paige Baumann
Lighting Designer: Paige Baumann
Asst. Lighting Designer: Kristen Peck
Master Electrician: Tal Kochav
Asst. Master Electrician: Riley Rowan
Director: Brant Russel



NO.	SYMBOL	DESCRIPTION
1	[Symbol]	1k Broad
2	[Symbol]	PAR 38
3	[Symbol]	Mini 10
4	[Symbol]	Colortran 20 Deg.
5	[Symbol]	ETC S4 PAR MFL
6	[Symbol]	PAR 64 MFL
7	[Symbol]	8" Fresnel @ 2kw
8	[Symbol]	12" Fresnel @ 5kw
9	[Symbol]	ETC 15-30deg S4 Zoom
10	[Symbol]	ETC Source 4 14deg
11	[Symbol]	ETC Source 4 19deg
12	[Symbol]	ETC Source 4 26deg
13	[Symbol]	ETC Source 4 36deg
14	[Symbol]	ETC Source 4 50deg
15	[Symbol]	ETC Source 4 Lustr II 19deg
16	[Symbol]	ETC Source 4 Lustr II 26deg
17	[Symbol]	ETC Source 4 Lustr II 36deg
18	[Symbol]	VL1100 TS
19	[Symbol]	Practical
20	[Symbol]	MR16 Birdie MFL
21	[Symbol]	Iris
22	[Symbol]	7.5" 4 Leaf Barn Door
23	[Symbol]	10" 4 Leaf Barn Door
24	[Symbol]	14" 4 Leaf Barn Door
25	[Symbol]	Template

INSTRUMENT KEY

[Symbol]	1k Broad	4
[Symbol]	PAR 38	2
[Symbol]	Mini 10	8
[Symbol]	Colortran 20 Deg.	2
[Symbol]	ETC S4 PAR MFL	38
[Symbol]	PAR 64 MFL	20
[Symbol]	8" Fresnel @ 2kw	8
[Symbol]	12" Fresnel @ 5kw	4
[Symbol]	ETC 15-30deg S4 Zoom	8
[Symbol]	ETC Source 4 14deg	1
[Symbol]	ETC Source 4 19deg	1
[Symbol]	ETC Source 4 26deg	58
[Symbol]	ETC Source 4 36deg	28
[Symbol]	ETC Source 4 50deg	24
[Symbol]	ETC Source 4 Lustr II 19deg	12
[Symbol]	ETC Source 4 Lustr II 26deg	24
[Symbol]	ETC Source 4 Lustr II 36deg	4
[Symbol]	VL1100 TS	4
[Symbol]	Practical	10
[Symbol]	MR16 Birdie MFL	1
[Symbol]	Iris	1
[Symbol]	7.5" 4 Leaf Barn Door	15
[Symbol]	10" 4 Leaf Barn Door	21
[Symbol]	14" 4 Leaf Barn Door	4
[Symbol]	Template	

TYP

PURPOSE	FRONT	REAR	UNIT #
TEMPLATE	[Symbol]	[Symbol]	[Symbol]
COLOR	[Symbol]	[Symbol]	[Symbol]

[Symbol] DENOTES ACCESSORY
[Symbol] UNIT #

[Symbol] DIMMER
[Symbol] CHANNEL

NOTES

Our Town
Patricia Corbett Theater
Final Run Lighting Plot
Section

Updated 9/30/21 PBE
Drafted by: Paige Baumann
Lighting Designer: Paige Baumann
Asst. Lighting Designer: Kristen Peck
Master Electrician: Tai Kochav
Asst. Master Electrician: Riley Rowan
Director: Brant Russel

PLATE

3

OF 3

SCALE: 1/4" = 1'-0"